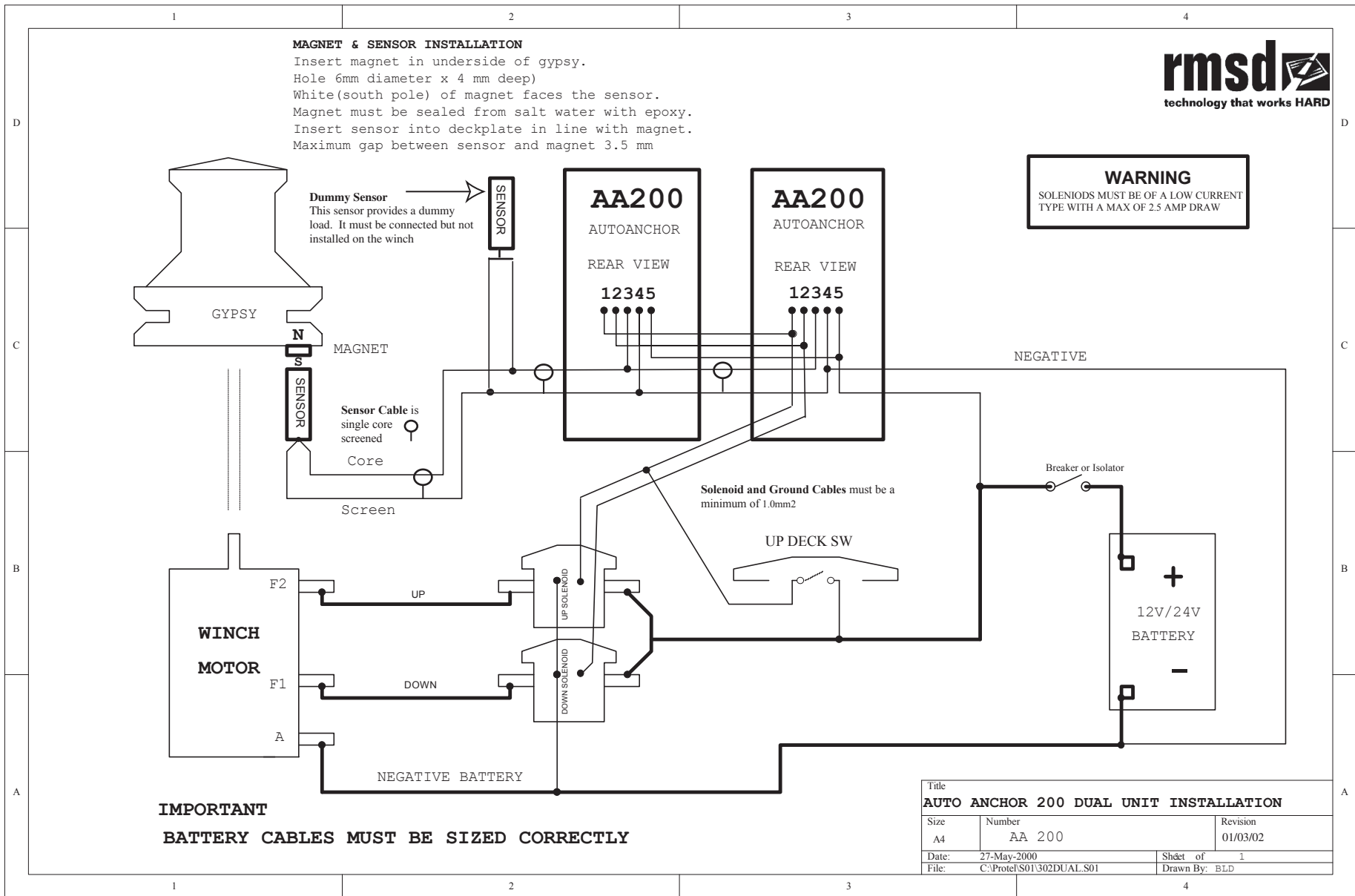


MAGNET & SENSOR INSTALLATION

Insert magnet in underside of gypsy.
Hole 6mm diameter x 4 mm deep)
White (south pole) of magnet faces the sensor.
Magnet must be sealed from salt water with epoxy.
Insert sensor into deckplate in line with magnet.
Maximum gap between sensor and magnet 3.5 mm

WARNING
SOLENIOS MUST BE OF A LOW CURRENT TYPE WITH A MAX OF 2.5 AMP DRAW



Title AUTO ANCHOR 200 DUAL UNIT INSTALLATION		
Size A4	Number AA 200	Revision 01/03/02
Date: 27-May-2000	Sheet of 1	Drawn By: BLD
File: C:\Protel\S01\302DUAL.S01		