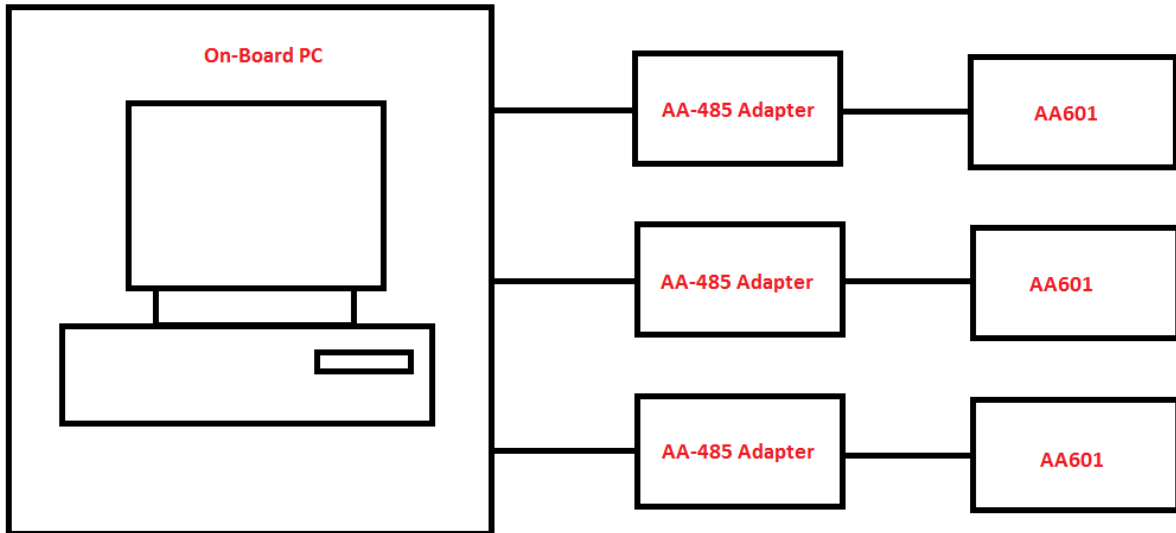


AA601 Interface on a 64 Bit System

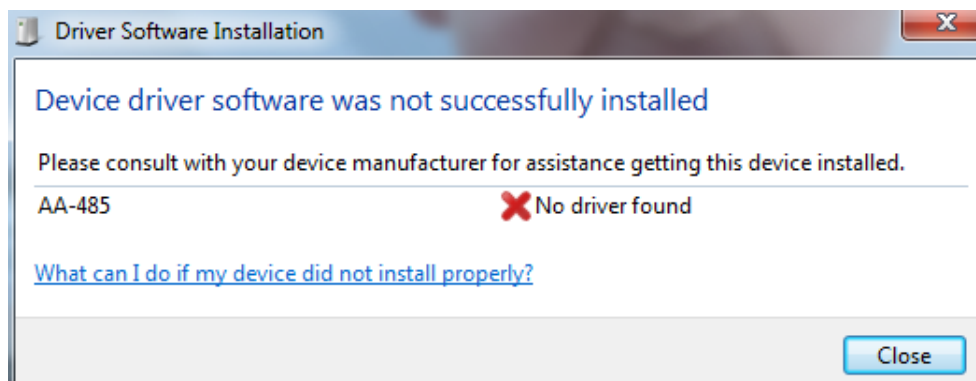


Note : The AA-485 adapter should be connected either direct to the PC USB port or through a powered USB hub.

Install the AA-485 adapter-64 bit driver software on any PC with a 64 bit system installed. To access this you need to right click and open the CD and go to the folder **“AA601_64_Bit_Adapter”** Double click on **“CDM v2.08.30 WHQL Certified.exe”**

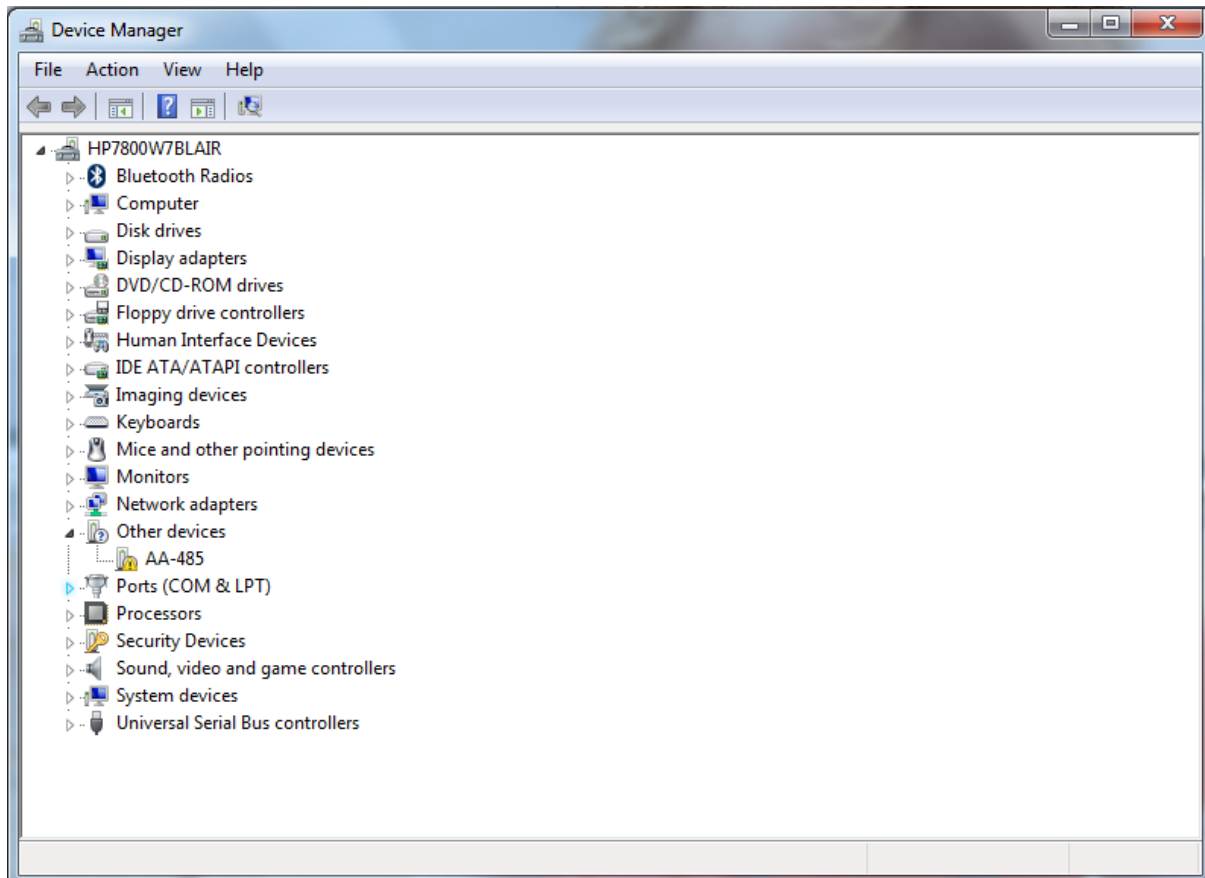
After installing the driver restart the computer.

After restarting, plug in an AA-485 adapter into the on-board PC USB port. The computer will now try to install the software automatically and come up with a message below.

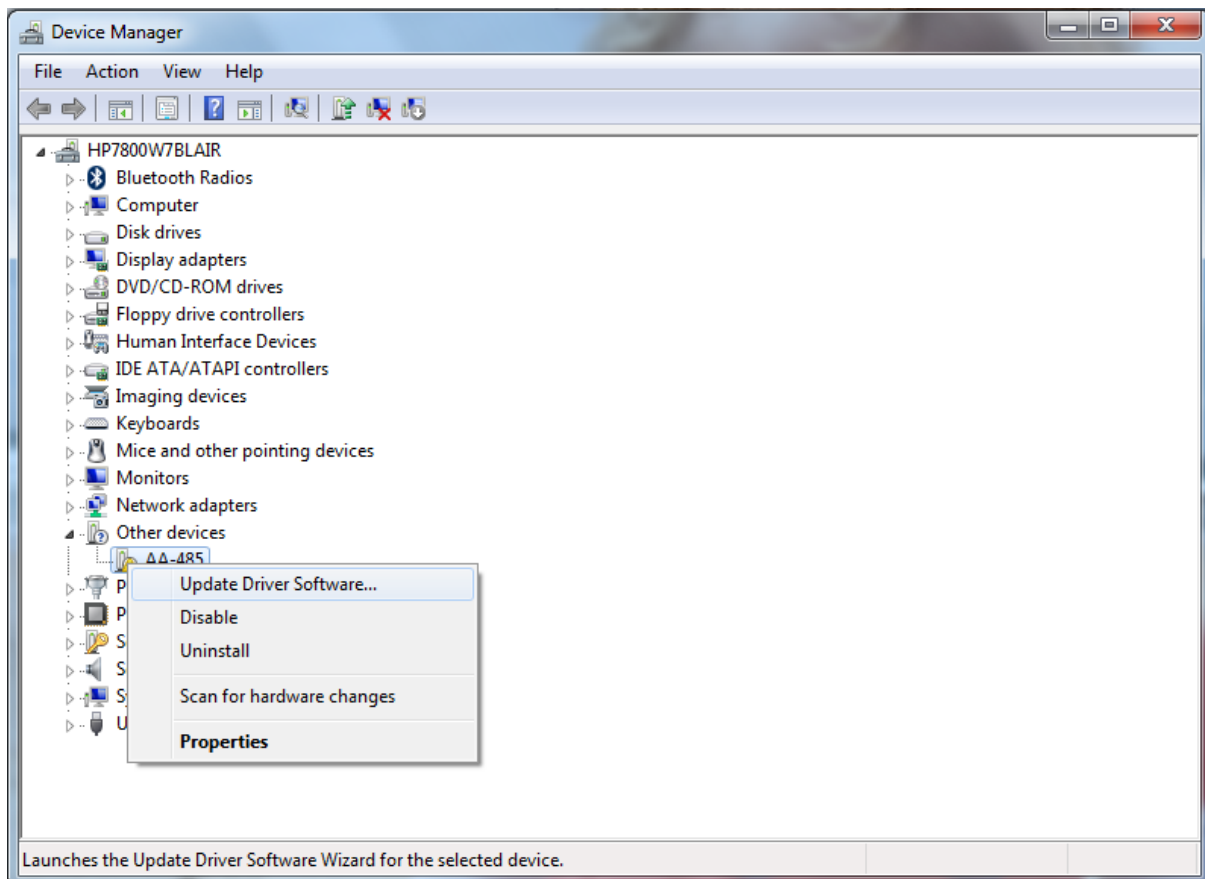


Now Open the **‘DEVICE MANAGER’** and you will find AA-485 under **“OTHER DEVICES”** with a yellow exclamation mark beside it. To open the device manager right

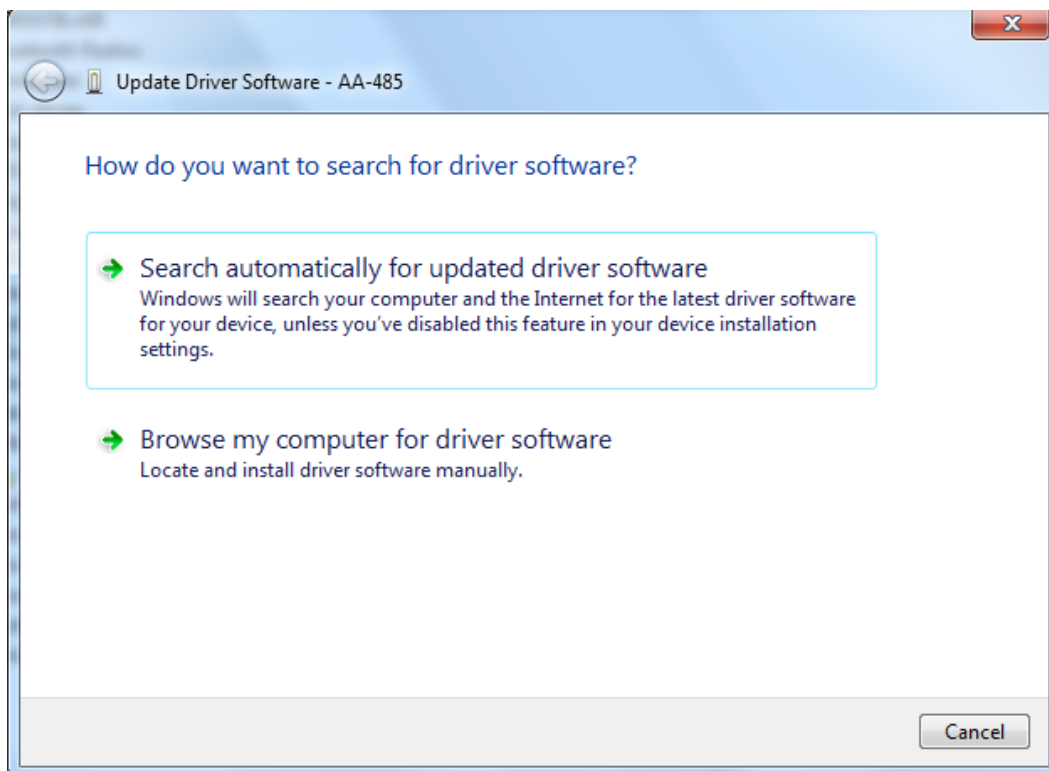
click on the “**COMPUTER**” icon on the desktop and select **Properties**. Click on ‘**DEVICE MANAGER**’



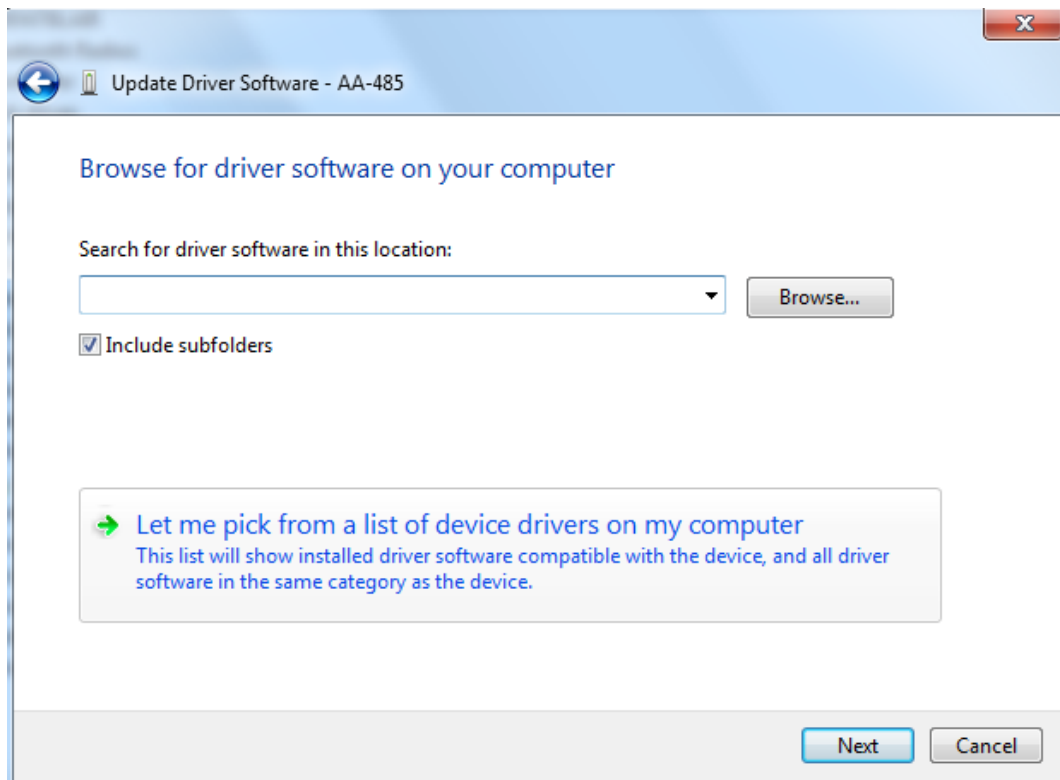
Now right click on “AA-485” and select “Update driver software”.



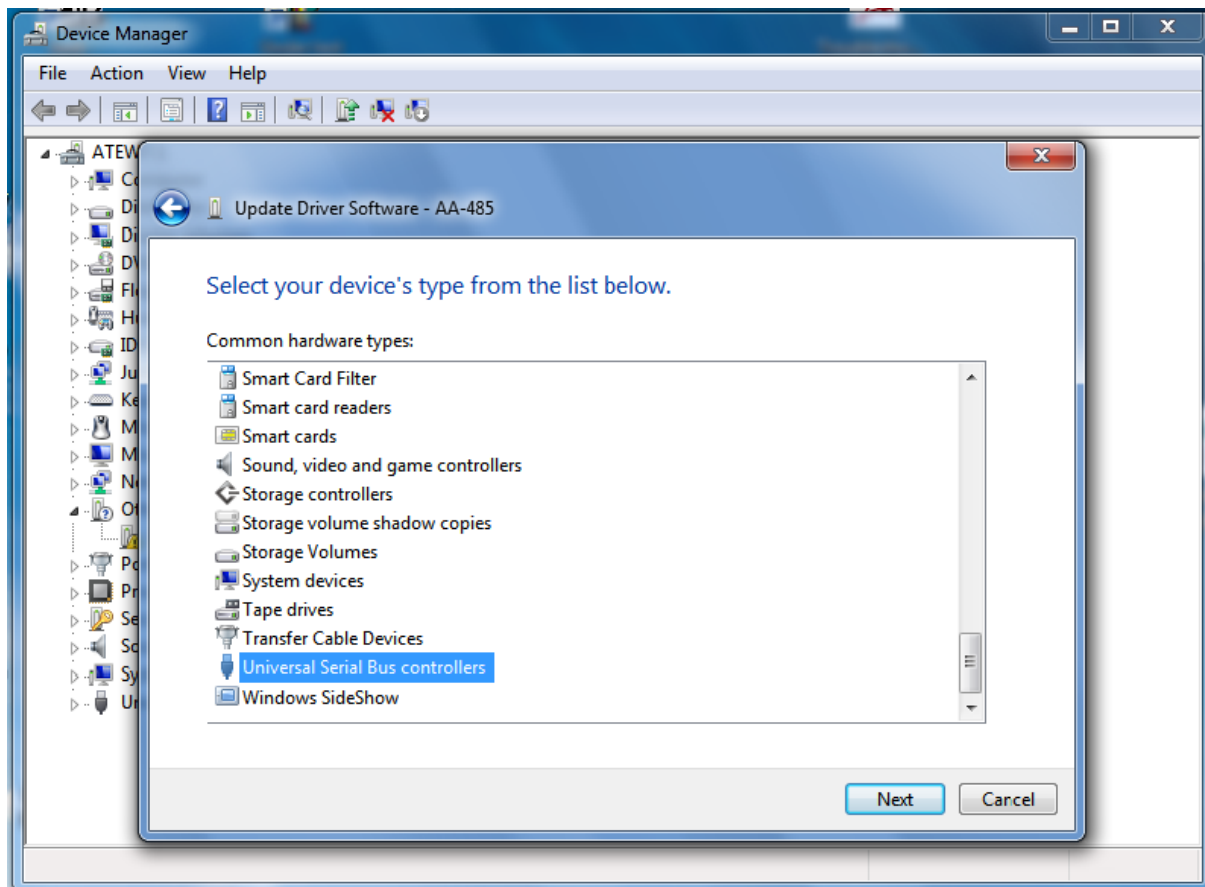
Now you will see the window below.



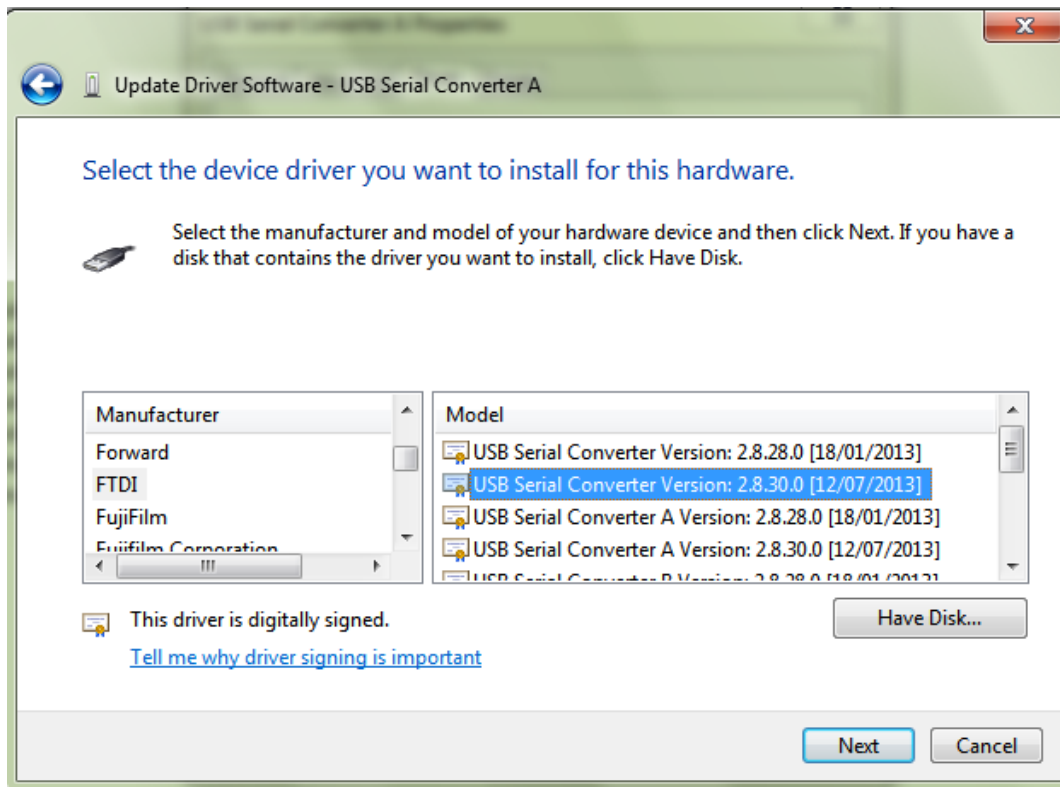
On this window select **‘BROWSE MY COMPUTER FOR DRIVER SOFTWARE’** and you will see the window below.



Select **“LET ME PICK FROM A LIST OF DEVICE DRIVERS ON MY COMPUTER”** and you will find the window below.



Select **“Universal Serial Bus Controllers”** from the list and click **“Next”**.

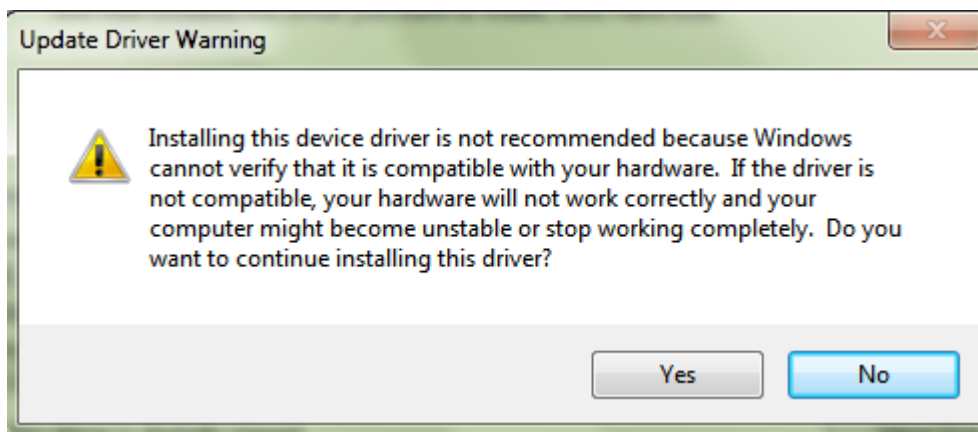


Now under Manufacturer select **“FTDI”** and under model select

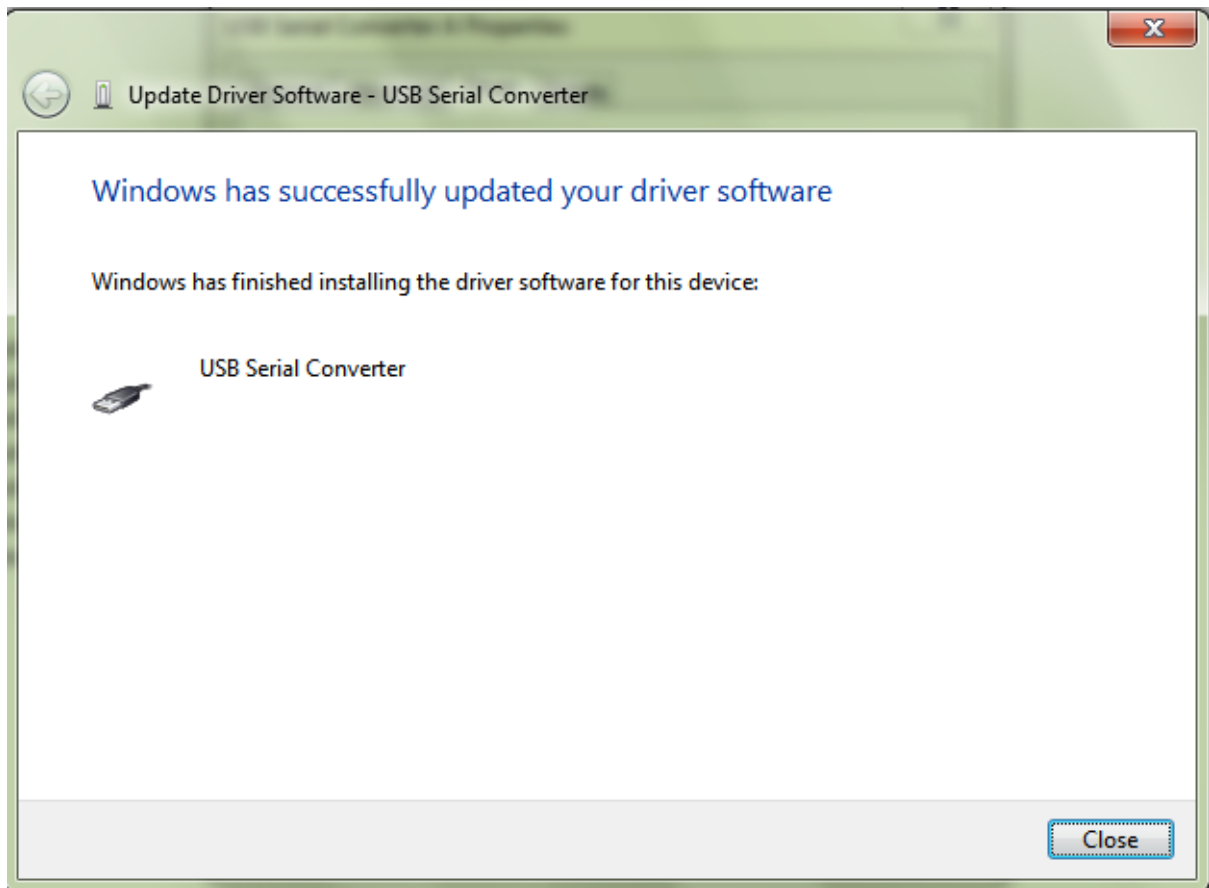
‘USB Serial Converter Version 2.8.30[12/07/2013]’

Click **“Next”**.

If you get a warning like below



Click **“YES”** and then you will find the window below.



Click **“CLOSE”**

Restart the computer.

Now Install the AA601 software on the computer from the setup CD provided. Go to **“setup—Interface setup”** and assign the right ID for the windlasses.