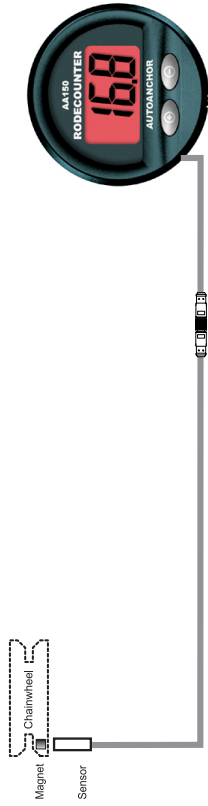
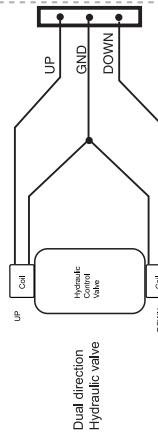


# AA150.3: AC, HYDRAULIC AND PLC WIRING FOR ALL CHAIN SYSTEM

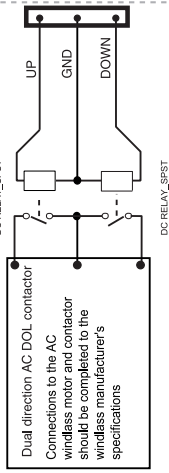


## Example windlass drives

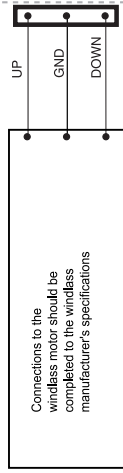
### Hydraulic Drive



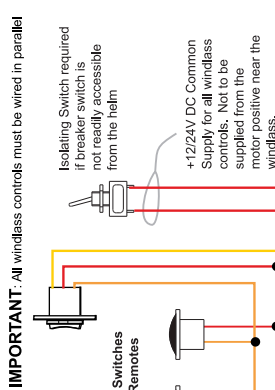
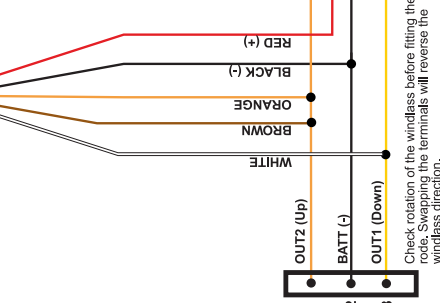
### AC electric motor



### AC VFD, PLC or solid state windlass drive



**WARNING:** Power must be disconnected during installation and when making any changes to wiring after installation

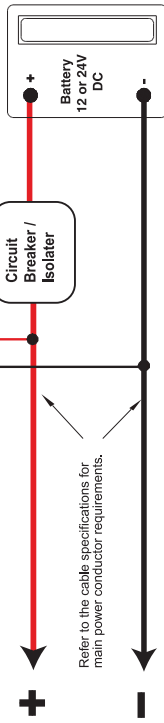


**IMPORTANT:** All windlass controls must be wired in parallel

Isolating Switch required if breaker switch is not readily accessible from the helm

+12/24V DC Common Supply for all windlass controls. Not to be supplied from the motor positive near the windlass.

Manually resettable breaker. Ensure rating is applicable to the current loads connected.



Refer to the cable specifications for main power conductor requirements.

INSTALLATIONS MUST BE CARRIED OUT IN ACCORDANCE WITH USCG, ABYC, NIMMA and BMEA REQUIREMENTS